



WISCONSIN SECTION NEWSLETTER

Issue Date: January 2026

ARRL Wisconsin Section Manager: Jason Spetz, KC9FXE

From the Section Manager

Hello, everyone!

I hope you are all getting along with the new year, so far. As I write this, my weather station is reporting a -46 windchill! I might be getting along with the new year in general, but I'd be crazy to say I'm getting along with the brutal winter. Have fun and stay safe if you are going out for Winter Field Day this weekend.

It looks like we have quite a robust newsletter for you this month as we gear up for 2026 and the Year of the Club activities (actually, some of those activities are already in progress). I've been approving several hamfests, too. They are all listed here and on the website. If one of the events is yours, please check my work and send me any corrections. While it's hard for some to believe, I can once again remind you all that I'm not perfect! Also, if you have an event that was approved and it is not listed, let me know. I added the most recent approval this morning.

Speaking of the Year of the Club, the ARRL launched a new clubs website. As part of their ongoing effort to improve the overall ARRL web browsing experience (still needs work), and to highlight our clubs, this page is hot off the press this week! It's a good one that I think you'll like. See for yourself: <https://clubs.arrl.org/>

This new website has a hidden benefit... It serves as a reminder for all the affiliated clubs to update and/or renew their affiliation. Also, if you want to become an affiliated club, the site walks you right through the process.

Enough out of me, for now. There's plenty more reading to be done here that looks a lot more interesting.

Before I go, I do want to announce a recent field services retirement and appointment. **Ron Purvis, WB9WKO**, a longtime Net Manager

UPCOMING EVENTS

MVARA Spring
Fever Swap Meet

March 7

Tri-County Hamfest

March 15

Madison Area RC
Hamfest

April 18

Ozaukee RC Swap
Fest

April 25

for the ARES/RACES HF Net, has decided to retire from that position. Ron plans to stay active with the net, and his many other duties, but thought it was time to pass the HF Net on to someone new. Thank you, Ron, for managing that net for so long (I believe 14 years) and keeping it active and relevant. I have appointed **Stan Piekarczyk, K9STN**, to fill Ron's vacancy effective February 1. Stan has been active with the net for a long time. His skills both in ARES and net procedures, along with his creativity, will be an asset for the net moving forward. Thank you, Stan, for stepping into this role. The ARES/RACES HF Net meets every Sunday morning at 0800hrs on 3967.

OK, now I'm really done. I'm looking forward to seeing many of you at the upcoming fests this year! Until then stay warm and stay safe. 73!

General Announcements, Event, and Reminders



2026 is the ARRL Year of the Club

In case you haven't heard, 2026 has been labeled the "Year of the Club" by the ARRL, and there are a lot of fun activities planned. They created a full webpage associated with the event which explains it better than I can.

[Year of the Club Website](#)



Wisconsin Section Field Services Position Openings



The following field positions are still waiting to be filled:

- District Emergency Coordinator – Northwest District
- District Emergency Coordinator – West Central District
- Net Control Station – Badger Emergency Net & Wisconsin Sideband Net
- Emergency Coordinator – Several

Contact the [Section Manager](#) for further information.



ARRL Call for Technical Manuscripts

Call for Manuscripts: Share your technical insights on your Field Day setups and Emergency Communications activities.



QST invites submissions of technical manuscripts from licensed amateur radio operators for upcoming issues focused on **ARRL Field Day and Emergency Communications operations**. We're looking for educational, how-to pieces that help fellow hams improve their setups, strategies, and technical know-how.

What We're Looking For:

- Innovative or proven techniques for emergency preparedness and response.
- Technical solutions for Field Day operations—power, antennas, logging, digital modes, etc.
- Integration of new technologies (e.g., SDR, mesh networking, solar power) in field scenarios.
- Examples of how the popularity of Parks on the Air (POTA) portable activations has changed your approach to setting up Field Day and EmComm stations.
- Examples of how portable antennas and LiFePO batteries have replaced base station antennas and generators.
- Manuscripts should have a strong “how-to” component. Tell us what you did, but more importantly, tell us how you did it.

Submission Guidelines:

- **Audience:** Licensed amateur radio operators.

- **Length:** 1,000 –1,800 words, plus high-resolution images with caption and photo credit information (name and call sign of photographer).
- **Tone:** Educational and collaborative—share what works!
- **Format:** Plain text or Word document.
- **Deadline:** January 31, 2026
- **Submit to:** qst@arrl.org

Why Contribute? Your article could be published in *QST*, ARRL's membership journal, which reaches thousands of fellow amateurs across the country and beyond. It's a great way to give back to the community and inspire others with your experience.



New Club Resources

There is a new version of the [Active Club Primer](#) posted on the ARRL website. This document offers a lot of good guidance for club success and is worth a look.

There is also a new [Convention and Hamfest Primer](#) that has been published.

Both are excellent and up to date resources for clubs!



New Ham? No problem!

If you are a new ham or know a new ham, the ARRL has a web page full of resources to help a new ham get started. The ARRL is also offering an Operating Manual to new members to help them get started.

Visit the new ham resources page at: <https://www.arrl.org/new-ham-resources>

ARRL MEMBERSHIP CAN HELP YOU GET ACTIVE ON-THE-AIR

The *ARRL Operating Manual*
is our gift to you when you join!

Get this comprehensive guide to amateur radio operating with code **RESOURCE**



FCC Amateur Radio license Renewal Help

Check out these helpful resources to help you through the renewal process:

- Easy to follow website with instructions and screenshots by W0IS:
<https://w0is.com/LicenseRenewal/FCCRenewalInstructions.htm>
- ARRL Website: <https://www.arrl.org/cores-uls-registration>
- Video featuring ARRL VEC Department Manager Maria Somma, AB1FM. You'll also hear from ARRL VEC "expert" Josh Nance on a few common issues he tends to help folks out with over the phone:
<https://www.youtube.com/watch?v=DI8nmjRJg4>



Member Contributions

Building Hamfests in Wisconsin

The Fox Cities Amateur Radio Club, W9ZL is working to build better, bigger Hamfests for Wisconsin!

Carol Young, W9PIO
Fox Cities Amateur Radio Club, W9ZL,
Hamfest Coordinator

In 2025, the Fox Cities Amateur Radio Club, W9ZL, held their annual Fall hamfest in a new, brighter, bigger venue location centrally located in Oshkosh, Wisconsin on Sunday, Nov. 2nd, 2025.

The attendance grew from 220 in previous years to 340 this year and expects to grow even larger in future years. With 91 tables of amateur radio items, literature, and memorabilia for attendees to find their treasures, it was a huge success.

2025 MEMORABLE EXPERIENCES:

- **SOCIALIZING WITH OTHER HAMS**
One of the best parts of amateur radio is socializing with people and building networks. One place to achieve this is at Hamfests!
- **INCREASE IN COMMERCIAL VENDORS**
Getting commercial vendors to be present at a hamfest in November in Wisconsin is definitely a challenge. This year we were pleased to have West Mountain Radio, Gold Medal Ideas, Wolf River Coils, and C3 Electronics be at our Hamfest.
- **LARGE FLEA MARKET AREA OF EXHIBITORS**
Our hamfest this year had 65 tables of flea market items for attendees to browse and discover unbelievable finds.
- **PRESENCE OF CLUBS**
The display of club information and knowledge provided by club members is valuable to any hamfest. This year the ARRL, ARRL Section Youth Coordinator, Winnebago ARES, and SATERN were all present. Thanks for participating and also presenting great information.
- **EDUCATIONAL PRESENTATIONS**
Our new venue provided two very nice presentation rooms and we had several 30-minute presentations. Topics included: Why join ARES; AUXCOMM; POTA Gathering; West Mountain; Flex Radio; and EAA KidVenture. Special thanks to all presenters.
- **VE EXAM TESTING PROVIDED**
Every year, our hamfest offers VE Exam Licensing. This year we had six people take their exams.
- **EXCESSIVE AMOUNT OF QUALITY RAFFLE PRIZES**
For a Wisconsin Hamfest, we outperformed any other hamfest with raffle prizes. Our new coordinator reached out to many sponsors and received over \$5000 worth of incredible raffle prizes. Our Grand prize was a Yaesu FT 710. We also had a Yaesu FTM 510 ASP, several handhelds, Bioenno batteries, two POTA packages from Wolf River Coils and C3 Electronics, Nano VNA, educational books from Ham Radio Prep and Craig Buck, Gift Certificates from ARRL, R&L Electronics, Mastrant, NARA, DX Engineering, Heil Sound Handbooks, T-Shirts & Stickers, Prepp Comm MMX-Zero, West Mountain Radio Speakers, Armoloq Wire Winders, Radioddity handhelds, and RT Systems Programmable Membership and mouse pads. A special thanks to all our great sponsors for their generosity.
- **FOOD & BEVERAGES PROVIDED**
Our venue also had a kitchen area and our club served breakfast and lunch items for attendees and exhibitors to have food and beverages at the event.
- **INVITING WELL-LIT LARGE VENUE HALL WITH SPACIOUS AISLES**
Sunnyview Expo Center's venue was well-lit, clean and bright, and our setup committee did a marvelous job of providing spacious aisle to accommodate a large crowd to browse through the exhibitors area. Many comments were made about the venue being a great location and inviting space. The center hall was 20,800 sq. feet and the south wing area for the presentations and VE testing was another 7,800 sq. ft. We also have the opportunity to expand in the future to the west wing of

another 7,800 sq. ft. This is important as we continue to grow and hopefully incorporate an ARRL State Section Convention with our future Hamfests.

CONCLUSION:

One of the best outcomes of our hamfest is attendees came from 8 am and stayed until 12:30 pm. View FCARC Hamfest photos and more future hamfest information at www.fcarc.club or <https://www.c3electronicsllc.com/swapfests>



A “Taste” of Field Day

Reinventing Field Day for a Changing Club

By Fred Glenn, K9SO (VP, Lakeshore Radio Association)

For nearly 50 years, the Lakeshore Repeater Association in southeastern Wisconsin had been primarily a VHF/UHF repeater club. HF activity was minimal, and interest in running a full weekend ARRL Field Day operation had declined. As our membership aged, few volunteers were willing to commit the time and physical effort required to erect towers, string long antennas, staff a 24-hour + schedule, and tear everything down afterward.

At the same time, several members were active in Parks on the Air (POTA). Their portable HF stations were small, effective, and deployable in minutes. That contrast gave us an idea: what if we reimagined Field Day around those portable HF operations and reduced the time commitment to something manageable for more members?

Four years ago, we launched a new model called **A Taste of Field Day**—a 5–6-hour event designed to deliver the HF Field Day experience in a compact, highly accessible format. The goal was simple: introduce or reintroduce as many members as possible to HF operating without the barriers of the traditional Field Day structure. Just a “taste” of what is involved.

The format has exceeded every expectation. It revived HF activity within the club, attracted new members, and ultimately changed the identity of our organization. HF participation grew so dramatically that we recently renamed ourselves from the *Lakeshore Repeater Association* to the *Lakeshore RADIO Association*.

This article describes the structure we used, how we promoted the event, and what we learned so that other clubs may adopt a similar approach.

Event Structure and Operating Goals

To give participants a complete and meaningful Field Day experience within a short timeframe, we designed the event around three operating components:

Multiple POTA-Style Portable Stations

Several operators deployed self-contained, battery-powered HF stations and operated under their own call signs. These stations reflected true emergency preparedness: rapid setup, independent power, and minimal infrastructure. To encourage activity, we created a friendly “contest within the contest” among the portable stations.



One of several POTA setups. By leveraging POTA operator experience, we kept the spirit of emergency operation alive.



Members operated from their personal “GO-TO” boxes

A Traditional Field Day Station (KR9RK)

To maintain alignment with ARRL Field Day rules and procedures, we operated one station under the club call, KR9RK, using emergency power and the standard Field Day exchange. All

other stations operated independently using different call signs. This gave newer members experience with the conventional Field Day workflow.



Activity at our more traditional Field Day station. Note the radio already sporting one of the “Taste of Field Day” stickers

A Remotely Operated “Big Gun” Station

To demonstrate high-performance HF contesting, we provided access to a remotely controlled Class D station with a strong signal and excellent receive performance. Many operators, especially newer licensees, had never run a frequency or handled a pileup. The remote station gave them the opportunity to experience high-rate operation without the logistics of transporting large antennas or amplifiers.



Our "high rate" Class D remote operation

Together, these stations offered a broad range of operating experiences in a compact event, showcasing portable techniques, traditional emergency operations, and modern remote-station capabilities.

Planning and Promotion

Strong participation was essential to the event's success. We began promotion several months ahead of time, making announcements on our VHF/UHF nets, in club newsletters, at neighboring clubs' meetings, and through local amateur radio social media groups. We distributed a simple flyer that emphasized the short duration of the event and the opportunity to get hands-on HF experience.

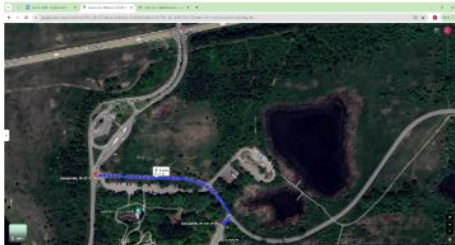


"Taste of Field Day" event

Saturday, June 28 12:00pm-5:00pm

Everyone is welcome! Please RSVP to VP@nukkin.com with # of attendees (for our planning) or just drop in and BYO POTA at Bong

Richard Bong State Park directions to Shelter #1:



Enter from SR 142 (Burlington Rd). Take the first road to the left after the entrance ranger station. Go about 1000 feet and turn right to shelter #1 parking area. We're right next to the park amphitheatre. Google map directions to Richard Bong State Park: [DRIVING DIRECTIONS LINK](#)

Fun for the whole family! Emergency Field Day Hi-R transmitters, "Big Gun" remote Hi-R Radio stations, BYO POTA stations, "Foxhunt" transmitter hunt activities and Picnic food / refreshments provided (BYOB and your own chairs if desired ... lots of picnic tables)

Site selection mattered. We chose a Wisconsin state park with easy access, ample operating space, and family-friendly amenities. The park location enabled POTA operation, required no special logistics, no heavy equipment, and no long runs of coax. This made attendance easy for members of all ages.

We also aimed to make the day enjoyable for non-operators. We set up in a highly visible section of the park and had an assigned "greeter" welcoming visitors and giving tours of the exercise. A skilled cook rounded out the family picnic atmosphere. These elements turned "A Taste of Field Day" into a social outing rather than just an operating exercise.



NukkinFutz Pictures
June 28, 2025 2:40 PM

To create continuity year-to-year, we produced simple and low cost memorabilia—stickers and customized mouse pads—featuring the event logo. These became popular items, raised modest funds via donations, and helped establish the event's identity.



Commemorative stickers and mouse pads created year-to-year continuity and their sale helped cover the event's expenses.

Results

After four years of running **A Taste of Field Day**, several outcomes became clear:

Portable operating skills translate directly to Field Day efficiency.

Our POTA operators were able to deploy complete HF stations in minutes. This eliminated the traditional setup burden associated with full-scale Field Day operations and allowed us to begin making contacts almost immediately.

A short event increases participation.

Members who could not commit to an overnight event were enthusiastic about participating in a 5- or 6-hour operating window. Attendance increased every year.

A remote “big gun” station is a powerful teaching tool.

The remote Class D station gave many operators their first exposure to pileup management, frequency control, and contest-style operating. This experience sparked additional interest in HF contesting and remote operation throughout the club.

Family-friendly activities matter.

A planned Foxhunt for kids and club picnic atmosphere aimed to encourage family involvement. This broadened participation and strengthened the sense of community engagement.

The event revived HF activity.

Members who had been inactive on HF for years began operating again. Many upgraded their licenses. Some purchased new equipment. Others built antennas or portable kits. The enthusiasm led us to construct a permanent club HF station. LRA members can now remotely operate 3 radios in two different states.



One of our HF antennas at the new remotely operated KR9RK club station in Raymond, Wi. There are 3 towers, two radios, and 4 antennas at this site. A station in North Carolina is already connected with others planned.

Membership grew significantly.

Since launching “A Taste of Field Day”, our club membership has tripled and grown to 132 active Hams. The event became a catalyst for new activity and new members.

Lessons Learned

Over four years of refinement, several lessons stand out:

- **Simplicity increases participation.** Reducing setup requirements encourages more members to operate.
- **Portable skills are valuable.** Many members already have go-kits—use them.
- **Friendly competition increases operating time.** The POTA mini-contest kept stations active.
- **A strong remote station adds value.** It provides an operating experience difficult to replicate in the field.
- **Keep it welcoming.** Food, family activities, and a relaxed environment matter.
- **Identity helps.** Stickers, logos, and traditions create continuity and anticipation.
- **A small event can have large impacts.** A short, approachable Field Day can revitalize HF activity even in a repeater-centric club.

Conclusion

“A Taste of Field Day” demonstrated that ARRL’s Field Day does not need to be large or labor-intensive to be successful. By scaling the event to match our club’s capabilities, leveraging portable HF expertise, incorporating a range of operating styles, and emphasizing accessibility, we created an event that renewed interest in HF operating, demonstrated our emergency preparedness, strengthened club cohesion, and drove sustained membership growth.

This model is easily replicated. Clubs with limited volunteers or declining Field Day participation may find that a shorter, portable-focused event offers the ideal balance of learning, operating, and community engagement. For our club, the impact has been transformative—so much so that it changed not just our participation in Field Day, but our club’s identity itself.

Fred Glenn, K9SO, has been licensed since 1964 and holds an Amateur Extra Class license. An electrical engineer and active homebrewer, he enjoys HF operating, remote station operation, and experimenting with station design. He serves with the Lakeshore Radio Association and helped develop its “Taste of Field Day” program.

(Photos courtesy of AC9OT, K9WBT, K9UET, KC9JOB, KC9FSW, and K9SO)

Public Information Coordinator Report

From Myron Oestreich, KB9STB, Section Public Information Coordinator:

We have reached the first newsletter of 2026, and with that a whole new year full of goals, aspirations, adventures and misadventures. I do hope the holidays were good to you, and wish you the best for 2026. As you’re reading this, I’m sitting on a tropical beach sipping mimosas and waiting for the call to go back to the ship. Wait. Let’s back that train up. I’m home recuperating from heart surgery. In my mind, I’ll definitely be on a tropical beach – and absolutely willing to live vicariously through anyone reading that may have a tropical vacation planned. With that thought in mind, this month’s stand-up philosophy submission will be touching on bigger things during the year to help plant some food for thought.

With a new year dawning, we know that 2026 has been designated as the Year of the Club by the American Radio Relay League. We know the vital role that clubs provide to the amateur radio community, and 2026 is a golden opportunity to celebrate all the great things clubs can do. “There are many programs, contests, operating events and recognition opportunities designed to celebrate club accomplishments and inspire new ideas” according to the ARRL. There will be various activities and initiatives rolled out by ARRL throughout the year focusing on club-centric topics that include things aimed toward growing and strengthening clubs and recognizing clubs that achieve milestones. As of the writing of this, ARRL has two contests going on – one has to do with club newsletters and the other has to do with club websites. Along with that, ARRL has launched a new clubs website – clubs.arrl.org which gives good information on ARRL affiliated clubs located in your area and has resources for clubs to build on current progress.

January 24 and 25 will be Winter Field Day. This event is a slightly different version of the June (summer) Field Day – mainly because of cold, snow and all the majesty of a winter's morn. It is ultimately a communications preparedness exercise, albeit a bit spicier because of Mother Nature always being the wild card in this part of the country.

Starting in March, we're back into hamfest season again! This year, the hamfest season kicks off on March 7 with the Mississippi Valley Amateur Radio Association's annual hamfest at the Holmen American Legion. Hamfests are a great way to connect (or reconnect) with fellow hams, do some shopping and help support local radio organizations along the way. Please remember, if you're having a fest and you'd like ARRL to be there, your event needs to be registered through ARRL's website and an email needs to go to the Section Manager mentioning the fest and asking about an ARRL presence.\

Speaking of March, March 15 will be the annual Wisconsin QSO Party, sponsored by the West Allis Radio Amateur Club. This event is great fun and helps put Wisconsin in the figurative crosshairs for radio communications during the seven hours of the contest. The beauty of the QSO party is that it can be a club or individual event, and it's a great opportunity for both the hardcore contester and the operator who's new to the airwaves and may be learning how to tune in signals or work a contest.

In May, there are hamfests scheduled for Superior and Green Bay, and in early June there is a hamfest in La Crosse.

The fourth full weekend of June is ARRL Field Day! This year's Field Day will be June 27 and 28. It's never too soon to start planning your event. ARRL will be releasing more information about it as the event draws closer, and it'll be talked about here as well so we won't belabor it much this month.

The one last event I wanted to get on the radar this month is in August. That event is National Night Out. This year, it'll be held somewhere around August 4 in many locations throughout the state and nation. This is a great outreach opportunity to show the public what amateur radio is and how amateur radio works by setting up and showing off your skills and abilities.

Lest we forget the quintessential operating events like Parks On The Air, Summits On The Air, Islands On The Air, the DXPedition to Bouvet Island in February and March, special event stations at EAA and others, and of course Kwik Trips On The Air and Dunkin' On The Air for the coffee fiends amongst us. No worries if you're not familiar with the last two. Those came out of much sleep deprivation a couple coffee fueled Field Day night shifts back and never went too far.

2026 has potential to be a really great year. All the ingredients are there for it to happen. Mix in a little SKYWARN or ARES/RACES activity and the year will be complete. I hope to see many of you at hamfests throughout the state as 2026 passes. Meeting and interacting with you is one of my favorite parts of what I do.

Section Youth Coordinator Report

From Etienne Robitaille, K9ZN, Section Youth Coordinator:

No Report

Contact Me

Please email me at et.k9zn@icloud.com if you have any questions or issues about my Section Youth Coordinator work. Response times can range from an hour to a day.

Section ARES/RACES Report

From Kyle Schaefer, KC9SDK, Section Emergency Coordinator:

Wisconsin ARES/RACES – Annual Summary (Jan–Dec 2025)

Statewide Overview

Over the past year, Wisconsin ARES/RACES demonstrated **steady growth, operational maturity, and increasing integration with county emergency management partners**. Monthly reporting participation remained strong, with most districts maintaining consistent net activity, training cycles, and public-service support.

Membership fluctuated through the year—partly due to roster clean-ups in several counties—but overall participation levels remained high. Net sessions, training events, and exercises formed the backbone of statewide readiness, with **SKYWARN activity peaking during spring and summer**, and **public-service deployments increasing during the warm-weather months**.

Across all districts, the year was marked by **expanded Winlink use, growth in AREDN mesh experimentation, multi-county exercises**, and a **notable increase in inter-county cooperation**, especially during severe weather events and large-scale public-service operations.

Key Statewide Trends

1. Training & Exercises Intensified Throughout the Year

- ICS-300, ICS-400, G-191, G-251, and AUXCOMM courses were widely attended.
- Multiple counties conducted **tabletop and full-scale exercises**, including nuclear plant drills, storm-response simulations, and multi-county winter storm scenarios.
- Winlink proficiency grew significantly, with many counties conducting **weekly Winlink nets**, P2P testing, and gateway upgrades.

2. Public-Service Support Expanded

Events included:

- Ride Across Wisconsin
- Autumn Trek
- National Night Out
- Irish Fest
- Bike the Barns
- Badger Challenge
- Gravel rides, marathons, and community festivals

These events strengthened relationships with local agencies and provided real-world communication challenges.

3. SKYWARN Activity Surged in Spring & Summer

- Multiple severe weather activations occurred, including tornado events in Door County and Portage County.
- Several counties deployed spotters, conducted damage assessments, and coordinated with NWS offices.

4. Infrastructure Improvements Accelerated

Counties reported:

- Repeater upgrades
- Packet and VARA HF gateway expansion
- New ARES rooms and EOC radio installations
- AREDN node deployment
- Trailer refurbishments and comms-trailer testing

Chippewa, Ozaukee, Adams/Juneau, and La Crosse counties were especially active in infrastructure work.

5. Multi-County Collaboration Increased

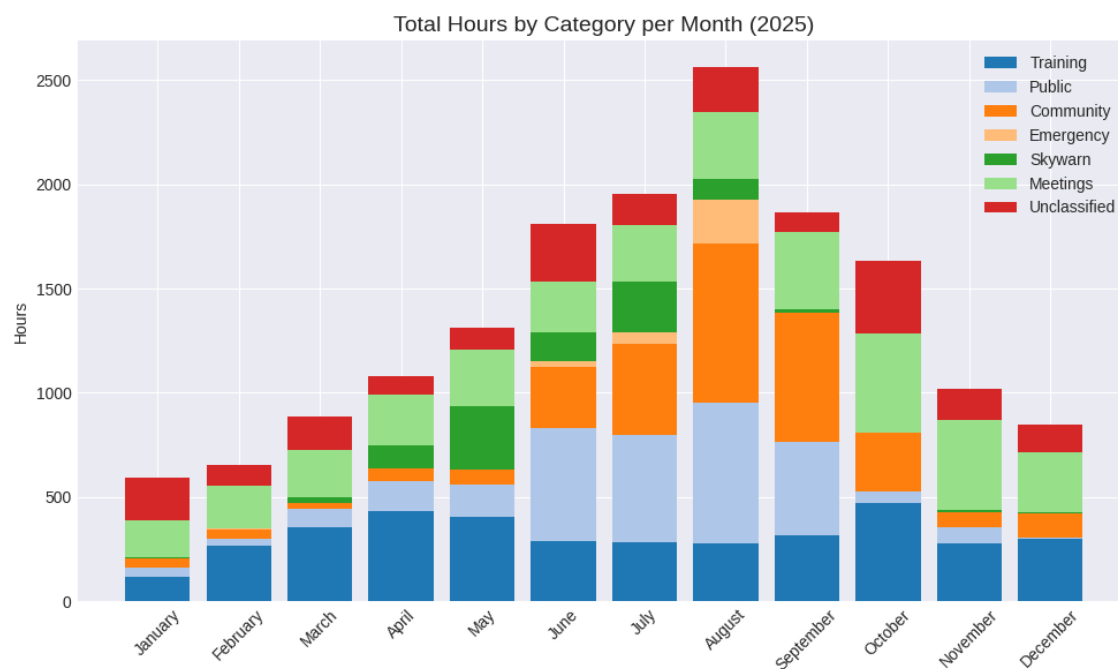
Examples include:

- Six-county winter storm exercise (Waushara, Waupaca, Marquette, Adams, Portage, Juneau)
- Joint training between Adams and Juneau
- Regional SET involving Milwaukee, Waukesha, Racine, Kenosha, Walworth, Washington, and Ozaukee
- Mutual aid during flooding and severe weather

This reflects a maturing statewide interoperability posture.

Statewide Metrics Summary

Month	Exercises	Training	Public	Comm- unity	Emerg- ency	SKYWARN	Meetings	Unclass- ified	Monthly totals
January	429.9	118.2	42	45	0	4	179.3	206.8	1025.2
February	86	268.7	32	43	3	0	207	99.5	739.2
March	379.8	356.5	87.5	26	0	28	225	164.5	1267.3
April	189.8	430.5	144.5	62	0	110	246.5	85.5	1268.8
May	174.6	405.8	152	74	1	305	267.3	107.5	1487.2
June	555.6	287	544	290.5	28	139.8	241.5	277	2363.4
July	115.2	282.5	516.3	434.3	58	244.1	268	150.5	2068.9
August	60.3	274.8	679.8	759	211.5	101.9	317.5	215.3	2620.1
September	179.1	315.6	449.5	620.5	0	16.5	367.5	94	2042.7
October	392.6	470.6	56	283	0	0	475.5	347.5	2025.2
November	238.9	279.2	75	70	0	13.5	431	149.5	1257.1
December	181.5	301.3	6	116	0	6	286	134.5	1031.3
Category totals	2983.3	3790.7	2784.6	2823.3	301.5	968.8	3512.1	2032.1	19196.4



County & District Highlights

Adams & Juneau Counties

- Significant growth in training, planning, and inter-county coordination.
- Built out EMCOMM trailer capabilities and packet infrastructure.
- Conducted major winter storm exercises using Winlink and QGIS mapping.

Chippewa County

- Expanded net participation by integrating GMRS repeaters.
- Secured a new ARES facility at the Wisconsin Northern Center.
- Supported Operation Badger Shield and multiple public-service events.

Eau Claire County

- Strong training cadence with monthly nets, siren tests, and Winlink nets.
- Supported large events including Ride Across Wisconsin and multiple marathons.
- Continued major upgrades to the county comms trailer.

Milwaukee & Waukesha (SE District)

- Major activation for August flooding damage assessments.
- Large regional SET in November with multi-county participation.
- Irish Fest support with APRS tracking and bus-coordination comms.

NE District

- Heavy involvement in FEMA Region 5 nets, WARHF/WARVHF nets, and AREDN development.
- Multiple counties conducted fairs, races, and community events.
- Strong emphasis on membership outreach and new-group formation.

SW District

- Consistent training and planning for major events such as Horribly Hilly Hundreds and Bike the Barns.
- Active involvement in WEM station management and interhospital preparedness committees.

La Crosse County

- Continued work to restore and modernize hospital radio infrastructure.
- Strong training focus, including Winlink workshops and ICS review.

Ozaukee County

- Significant repeater and radio-room renovations.
- Active participation in SET and public-service events.

St. Croix, Walworth, Washington, Waupaca, and others

- Maintained steady nets, supported local events, and contributed to regional exercises.

Overall Assessment

Wisconsin ARES/RACES enters the next year with **stronger infrastructure, deeper inter-county cooperation, and a more capable volunteer base** than at any point in recent years. The organization demonstrated resilience, adaptability, and a commitment to continuous improvement.

The year's activities show a clear trajectory toward:

- More digital-mode integration
- More structured training
- More collaboration with emergency management
- More public-service visibility
- More technical modernization

This positions the section well for 2026



Section Traffic Manager Report

STM Report
Wisconsin Section - November 2025

Book Traffic

FAQ # 292 Book 'em, Dan-O? What about "book" messages? Are they long? Are they bound? Can you judge them by their cover?

Book messages are sent, as they say, *by the book*. They meet the same criteria as individual radiograms. They just have some identical parts. When sending book traffic, the sender sends the identical or common parts first and then follows with the individual message numbers and varied parts for each message. It's more efficient. For example, identical texts might be sent to a number of Emergency Coordinators and since each message has a unique number the originator can keep track of individual responses.

In the preamble, message numbers should contain only figures, no punctuation, and no leading zeros. Filing time on routine messages may not be important, so it might be omitted. The date is never skipped. A complete address and current phone number is essential. The text should have a minimum of variations. Variable parts should be grouped so they could be sent as a single group. When sending a book, the text's variable parts can be sent as "blank" with the common parts and then filled in for each individual message in the book.

We test the NTS, and our traffic handling skills, with book messages for several reasons. We want to be sure the system is working. We want the system to hold up under heavy use. We know that disaster communication – especially welfare traffic – is sometimes sent as book traffic. So we practice.

Hams from the NTS and ARES/RACES groups need the same abilities and traffic skills so they understand each other when they assist the public in times of emergency. As usual, training will pay off. You can make book on it. 73 – K9LGU/STM – WI

STM Report Wisconsin Section December 2025

FAQ # 293 So how did 2025 compare? We're doing well. Not every aspect of net operation is measurable, but here are some annual net statistics.

2025 QNI (check-ins)	2025 QTC (traffic)	2025 QTR (time)	2025 SSNS (sessions)
32049	63780	149963	2296

Here's a chart comparing check-ins (QNI) and traffic (QTC) with some previous years.

	2012	2013	2014	2015	2016	2017	2018	2019	2020	2021	2022	2023	2024	2025
QNI	46582	44698	43579	43339	44976	39452	32591	30929	35720	36431	34729	33822	33189	32049
QTC	47421	47487	42099	44421	44527	45471	41823	37237	42607	51025	55390	55626	56791	63780
QNI change	-740	-1884	-1119	-240	1637	-5524	-6834	-1662	4791	711	-1702	-928	-660	-1140
QTC change	6551	66	-5388	2322	106	944	-3648	-4586	5370	8418	4365	236	192	6989
QNI	-0.02%	-0.04%	2.50%	-0.55%	3.8%	12.00%	-17.00%	-5%	15%	2.00%	-5.00%	-2.60%	-2.00%	-3.40%

QTC 0.16% 0.00% -11.4% 5.50% 0.2% 2.00% -8.00% -11% 14% 20% 9.00% 0.40% 0.30% 12.00%

What do the numbers show? Check-ins: down 3%. We still need to attract more traffic handlers, more net participants. Traffic is up a lot. 12% is significant. Again, we have the highest traffic total in over 15 years. We continue training in our daily, weekly, monthly activity, but the numbers don't tell the whole story. 73% of check-ins were on voice. How did we pass the traffic? Over half were messages on voice and the rest on CW and digital. The modes overlap and support each other. How quickly and accurately did we do it? Very. We still have the reliable BWN reports every day, the weekly digital tests, and the extraordinary traffic generation from NX9K and N9VC, to nourish the NTS.

Our success is due to *all* the participants – net managers, net controls, liaison stations, and regular check-ins. We practice so our message handling, one of the most important skills we offer to served agencies, becomes automatic. We sharpen accuracy and reliability. We discipline ourselves to follow net protocol. We spend all this time and effort to become a supportive group of trained operators. This past year, we logged around 150,000 hours in section net operation. We do it because it's satisfying, and we do it right because we care. - K9LGU/STM

...and don't forget about our nets:

WISCONSIN TRAFFIC NETS		Updated 9/22/2025						
Name Of Net, Frequency, Local Time	Net Manager	Net Control Stations						
		Sun	Mon	Tue	Wed	Thur	Fri	Sat
Badger Weather Net (BWN) 3984 KHz, 0600	K9LUK	KB9GO	K9LUK	N9NBC	W9CPY	W9IHW	AG9G	WB9WKO
Badger Emergency Net (BEN) 3985 KHz, 1200 ALT 7270 KHz	NX9K	WJ9L	WJ9L	W9RTP	N9VC	K9STN	NX9K	NCS ROTATES
Wisconsin Side Band Net (WSBN) 3985 or 3982.5 KHz, 1700	AG9G	NX9K KA9BAE	N9VC	KC9FXE	KB9GO	WB9WKO	AG9G	AC9F
Wisconsin Slow Speed Net (WSSN) 3555 KHz, Daily 1800	KB9ROB	KB9ROB	N9VC	*	*	*	AG9G	*
Wisconsin Intrastate Net - Early (WIN-E) 3555 KHz, 1900	WB9ICH	WB9ICH	K9LGU	KC9UC	N9CK	N9VC	AG9G	WB9ICH
Wisconsin Intrastate Net - Late (WIN-L) 3555 KHz, 2200	W9RTP	AG9G	K9LGU	KC9UC	N9VC	N9VC	W9RTP	W9RTP
ARES/RACES Net 3967 KHz, 0800 Sunday ALT 3977.5 or 7250	WB9WKO	*						
WI ARES/RACES Digital Net Tuesday on WINLink 7PM Mon - 7PM Tues	KD9USW		KD9USW					
WI ARES/RACES VHF Net on WECOMM Frequencies Last Thursday of the month 7PM	KA9KJE					KA9KJE		

* Net Control Operator needed. Contact Net Manager for information.

9/22/2025

In Memoriam

We have been made aware of the following members who have become silent keys since the last publication.

- Chris Wineinger, N9PPX, of Mukwonago, WI – [view obituary](#)
- Scot Thompson, WB0WOT, of Beldenville, WI – [view obituary](#)
- Mike Matthews, KC9LHB, of Wisconsin Rapids, WI – [view obituary](#)

On behalf of the Wisconsin Section, our condolences go out to the family and friends of our fellow hams who have passed. May they all rest in peace.

If you become aware of a silent key, from our section, please contact the [Section Manager](#) or Assistant Section Manager, [Tom Czaja, KG9EE](#) with the details.

Upcoming Fests and Conventions

March 7, 2026 – MVARA Spring Fever Swap Meet

Sponsor: Mississippi Valley Amateur Radio Association

Location: Holmen, WI

Website: <https://www.mvara.net>

March 15, 2026 – Tri-County Hamfest

Sponsor: Tri-County Amateur Radio Club

Location: Jefferson, WI

Website: <http://www.w9mqb.org/swapfest>

April 18, 2026 – Madison Area Repeater Association Hamfest

Sponsor: Madison Area Repeater Association

Location: Stoughton, WI

Website: <http://w9hsy.org>

April 25, 2026 – ORC 46th Annual Spring Indoor Swapfest

Sponsor: Ozaukee Radio Club Inc

Location: Cedarburg, WI

Website: <https://ozaukeeradioclub.org>

May 2, 2026 – ARAC Hamfest

Sponsor: Arrowhead Radio Amateur Club

Location: Superior, WI

Website: <http://thearac.org>

May 30, 2026 – Green Bay Hamfest

Sponsor: Green Bay Mike & Key Club

Location: Green Bay, WI

Website: <http://www.k9eam.org>

June 6, 2026 – Riverland ARC Swapfest

Sponsor: Riverland Amateur Radio Club

Location: La Crosse, WI

Website: <http://rarc.qth.com>

June 20, 2026 – FCARC Sunshine Swapfest

Sponsor: Fox Cities Amateur Radio Club

Location: Oshkosh, WI

Website: <https://fcarc.club/>

*** See these items and additional Section information on the [ARRL WI Section website](#). ***

ARRL Wisconsin Section

Section Manager: Jason Spetz, KC9FXE

kc9fxe@arrl.org



Photos from the FCARC Hamfest

WISCONSIN SECTION MONTHLY NET ACTIVITY

NOV 2025

NET	QNI CHECK- INS	QTC TRAFFIC	QTR TIME	SSNS SESSIONS	NM NET MANAGER
BWN	1053	1575	3230	30	K9LUK
BEN	356	320	402	30	NX9K
WSBN	496	199	724	30	AG9G
WSSN	160	62	365	30	KB9ROB
WIN/E	134	237	259	30	WB9ICH
WIN/L	138	63	240	30	W9RTP
WI ARES/RACES HF	56	15	132	5	WB9WKO
WI ARES/RACES VHF	9	0	33	1	KA9KJE
WI ARES/RACES DIGITAL	277	1799	8640	5	KD9USW
totals	2679	4270	14025	191	

P S H R SUMMARY NOV 2025

POSSIBLE POINTS >	40 nets	40 tfc	30 appt	5 /hr. sked events	5 /hr. emrg events	10ea bbs/ web pg	
STATION	1	2	• 3	4	5	6	T
N9VC	40	40	30	270	0	20	400
AG9G	40	40	30	35	0	0	140
K9LGU	40	40	30	20	0	0	130
KC9FXE	40	21	20	35	0	10	126
WB9WKO	40	40	30	15	0	0	125
NX9K	40	40	20	0	0	0	100
KB9GO	40	40	10	0	0	0	90
KC9UC	40	40	10	0	0	0	90

STATION ACTIVITY SUMMARY NOV 2025

STATION	ORIG	RCVD	SENT	DLVD	ATT	TOTAL
NX9K	650	278	731	0	0	1659 - BPL
WB9WKO	0	483	352	3	0	838 - BPL
KB9GO	0	470	166	3	0	639 - BPL
N9CK	0	280	275	0	0	555 - BPL
AG9G	0	243	164	0	0	407
KC9UC	0	699	86	0	0	155
N9VC	0	101	42	0	0	143
K9LGU	0	43	71	0	0	114
WJ9L	0	53	45	3	1	102
KB9ROB	0	50	16	7	5	78
W9RNA	0	17	3	14	2	36
W9RTP	0	22	4	1	0	27
WB9ICH	0	21	2	0	0	23
KC9FXE	0	5	11	5	0	21

WISCONSIN SECTION

STATION ACTIVITY SUMMARY DEC 2025

STATION	ORIG	RCVD	SENT	DLVD	ATT	TOTAL
NX9K	460	98	682	0	0	1240 - BPL
WB9WKO	9	436	325	2	0	772 - BPL
KB9GO	0	432	199	3	0	635 - BPL
AG9G	0	275	197	0	0	472
N9CK	0	215	215	0	0	430
N9VC	0	244	40	0	0	284
KC9UC	0	120	131	0	0	251
K9LGU	0	48	75	0	0	123
WJ9L	0	53	45	3	1	102
KB9ROB	3	48	12	7	3	73
KC9FXE	0	16	15	4	1	36
WB9ICH	0	23	2	0	0	25
W9RTP	0	22	2	0	0	24
W9RNA	0	9	2	8	1	20

WISCONSIN SECTION

P S H R SUMMARY

DEC 2025

POSSIBLE POINTS >	40 nets	40 tfc	30 appt	5 /hr. sked events	5 /hr. emrg events	10ea bbs/ web pg	
N9VC	40	40	30	195	0	20	325
AG9G	40	40	30	25	0	0	135
KC9FXE	40	36	20	25	0	10	131
WB9WKO	40	40	30	10	0	0	120
K9LGU	40	40	30	5	0	0	115
N9CK	40	40	30	0	0	0	110
NX9K	40	40	20	0	0	0	100
KB9GO	40	40	10	0	0	0	90
KC9UC	40	40	10	0	0	0	90

WISCONSIN SECTION MONTHLY NET ACTIVITY DEC 2025

NET	QNI CHECK- INS	QTC TRAFFIC	QTR TIME	SSNS SESSIONS	NM NET MANAGER
BWN	1090	2151	3363	31	K9LUK
BEN	400	267	539	31	NX9K
WSBN	505	185	681	31	AG9G
WSSN	162	66	402	31	KB9ROB
WIN/E	131	201	413	31	WB9ICH
WIN/L	144	72	240	31	W9RTP
WI ARES/RACES HF	51	8	93	4	WB9WKO
WI ARES/RACES VHF	34	0	50	1	KA9KJE
WI ARES/RACES DIGITAL	300	1900	7200	5	KD9USW
totals	2817	4850	12981	196	